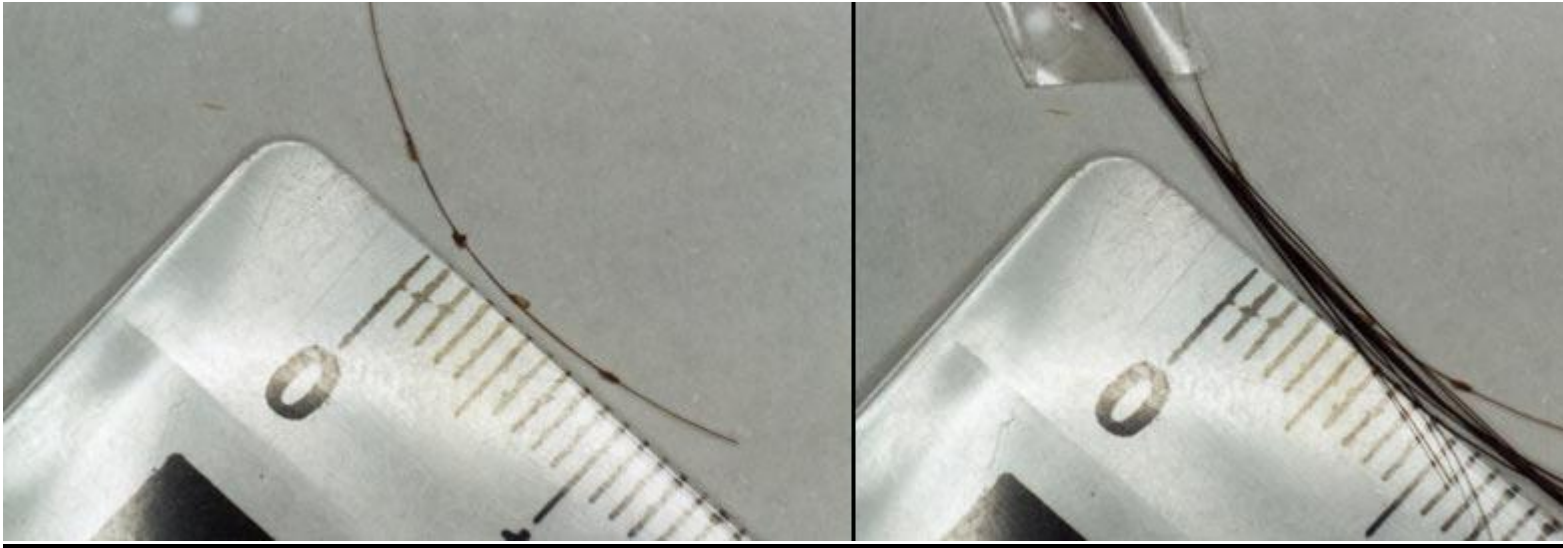


PICTURES / RESOURCES

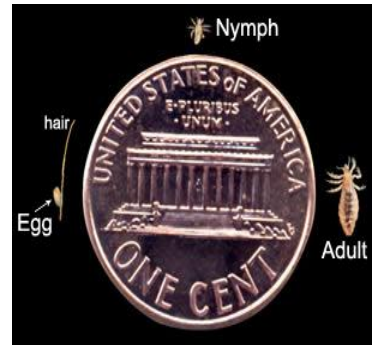


A head louse on a scalp.



Head lice are
2 - 4 mm long.

Eggs are the
size of a pinhead.



PLEASE BE PATIENT WITH THE TREATMENT AND YOUR CHILD.

THE TREATMENT IS TIME CONSUMING, BUT WORKS IF DONE METICULOUSLY

<http://www.state.nj.us/health/index.shtml>
<http://www.bergenhealth.org/>
<http://www.cdc.gov/lice/index.html>
<http://www.headlice.org/>
<http://www.dhpe.org/>
<http://www.kidshealth.org>
<http://www.hsph.harvard.edu/headlice.html>